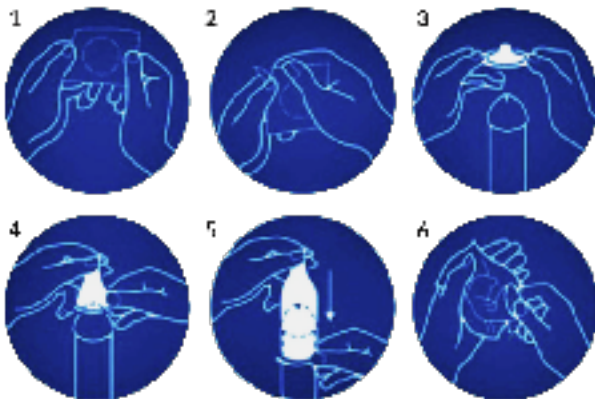


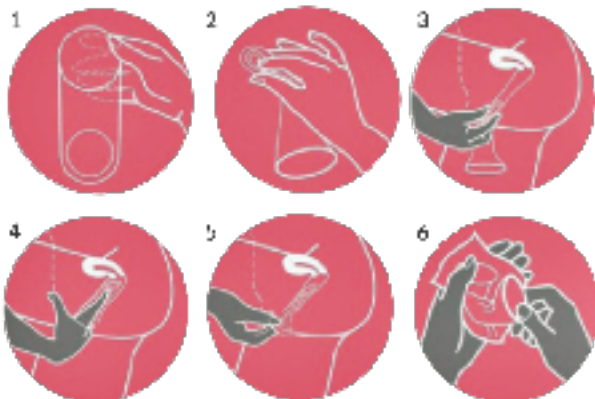
5 secrets to safe sex



Male Condom Instructions



Female Condom Instructions



Want to know more?

Central/East

Our place (Youth friendly services)	3319078
Reproductive health clinic (Suva)	3319144
CWM Hospital	3813444
Korovou Hospital	3430044
Vuridawa Hospital	3435030
Kadavu Hospital	3620788
Navua Hospital	3460181
Levuka Hospital	3440088

West

Reproductive Health (Lautoka)	6640243
	6660411
Lautoka Hospital	6660399
Nadi Hospital	6701128
Ba Hospital	6674022
Sigatoka Hospital	6500455

North

Reproductive Health Clinic (Labasa)	8812522
Labasa Hospital	8811444
Wainikoro Health Centre	8832444
Nabouwalu Hospital	8836044
Savusavu Hospital	8850444
Taveuni Hospital	8880444

About Gonorrhoea, and protecting yourself



Did you know that 1 in 4 people have a Sexually Transmitted Infection?

What's your status?

About Gonorrhoea, and protecting yourself

WHAT IS IT?

Gonorrhoea 'tona tona' is a bacterial STI that infects the reproductive organs, the urethra (body part you pee through) mouth, throat, or anus.

AM I AT RISK?

Risk factors include:

1. Unprotected sex: anal, oral, or vaginal
2. During delivery: through the birth canal from mother to baby

Preventing an STI is easier than treating an STI.

HOW DO I KNOW I HAVE IT?

Swab test from the vagina, anus or throat at your nearest health facility.

Get tested!

SYMPTOMS

- Burning or pain when peeing
- Milky, yellow, or smelly discharge from penis, anus, or vagina
- Pain during sex
- Sore dry throat
- Swollen eyes (conjunctivitis)
- Women may bleed between periods
- Lower stomach pain

COMPLICATIONS

Untreated, gonorrhoea can cause:

- Pelvic Inflammatory Disease
- Infant at risk of conjunctivitis (bacteria in eyes that can harm vision) during delivery
- Infertility
- Unsafe or deadly pregnancy

WHAT NOW?

TREATMENT

- Antibiotic tablets
- Your sexual partner(s) need to be tested
- Avoid sex at least a week after both you and your partner have been treated
- Follow up test after 3 months to ensure you have not gotten the infection again

PREVENTION

- Know your status and that of your partner
- Use a condom from start to finish each time you have sex

Get tested every
6 months.