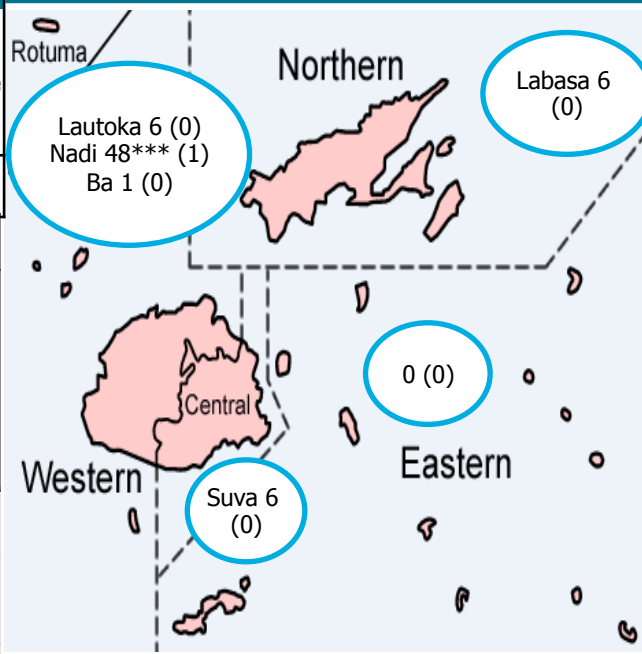




**Current status of cases**

Total cases (new since last update)	Total active cases (new since last update)	Total recoveries (new since last update)	Total deaths	Days since last border quarantine case	Days since last case outside border quarantine	Days since first case
67 (0)	1 (0)	64 (0)	2	5	338	368

**Cases by location when reported (active cases)**



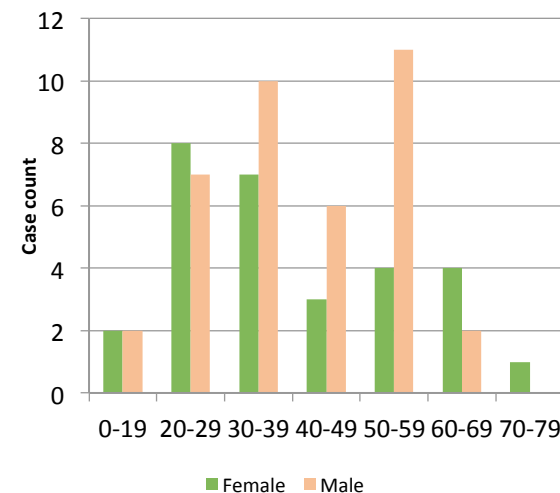
**Transmission**

WHO classification: Imported/sporadic cases. Note: All cases reported from March 19<sup>th</sup> to April 18<sup>th</sup> were international travel associated, or epidemiologically linked to international travel associated cases in the community. There were 0 cases reported from April 19<sup>th</sup> to July 5<sup>th</sup>. **Cases from July 6<sup>th</sup> to date were international travel associated - detected while undergoing mandatory 14 day quarantine in government designated international border quarantine facilities in Nadi.\***

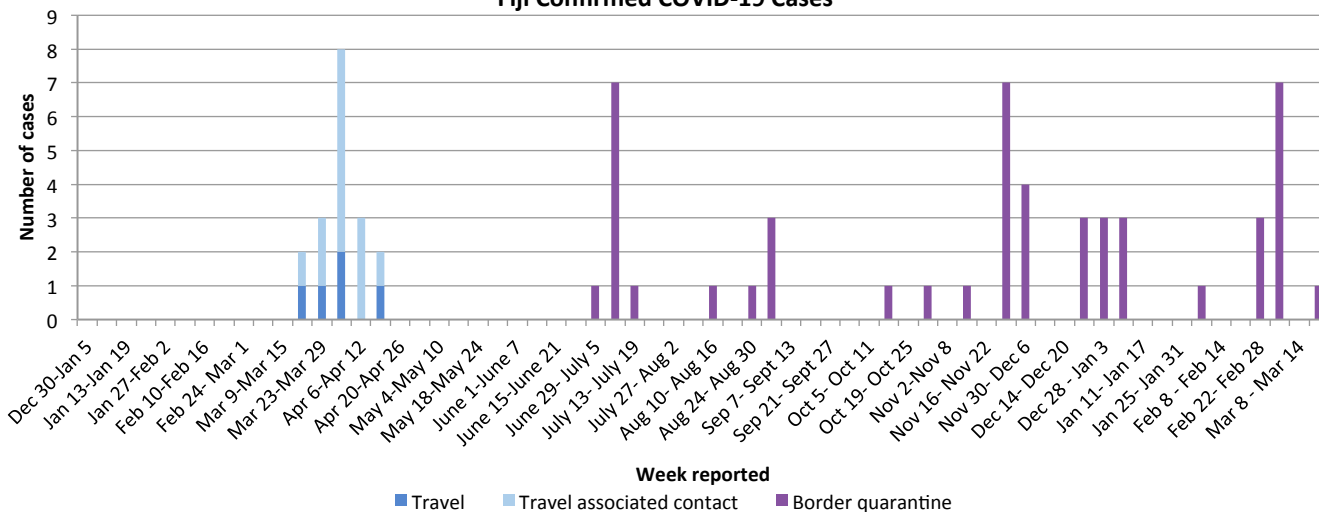
**Laboratory testing\*\***

Total tests done	Total tests per 1000 population	7 day rolling test average	2 week rolling test average	Total test positivity (%)	Total tests per confirmed case
35,383	40.0	220.7	1609.5	0.2	484.7

**Cases by age group and sex**



**Fiji Confirmed COVID-19 Cases**





**FIJIAN GOVERNMENT**  
**MINISTRY OF HEALTH AND MEDICAL SERVICES**

\*2 border cases recorded in week of November 30-December 6<sup>th</sup> were crew of the international cargo vessel MV Island Chief, which had docked at the Lautoka and Suva ports after arriving from New Zealand, via Nukualofa, Tonga – none of the crew disembarked in Fiji. The 2 positive cases onboard were admitted to a hospital isolation facility. For more information see <http://www.health.gov.fj/press-statement-potential-covid-19-cases/>

\*\*Prior to January 15<sup>th</sup> 2021 all laboratory testing for the virus that causes COVID-19 occurred at Fiji CDC (using mainly RT-PCR with some Cepheid Xpert Xpress testing). Therefore, all test data was sourced from Fiji CDC. From January 15<sup>th</sup> 2021, testing using Cepheid Xpert Xpress began at Lautoka hospital, followed by Labasa hospital. Occasional delays in reporting of negative test data from these labs to Fiji CDC may lead to an undercount of daily/weekly testing numbers listed in the COVID-19 Updates since January 15<sup>th</sup> 2021. Once negative test data from these labs are received, subsequent COVID-19 Updates, and the test tables and graphs on the website, are updated accordingly. Note that any positive test results will be notified immediately.

\*\*\*The government designated international border quarantine facilities are located in Nadi, therefore border quarantine cases are almost exclusively reported from Nadi. This explains the disproportionately high number of cases recorded for Nadi compared to other locations.